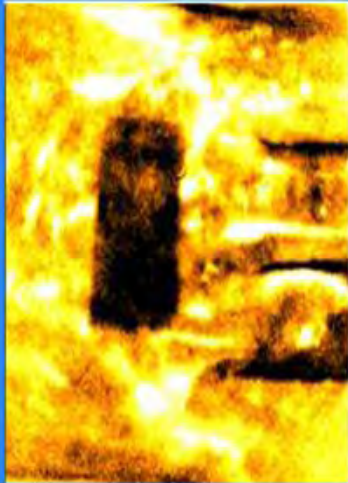


Bio-Safe[®] Lotion on the Back of Hand

455 nm Excitation, 530 Emission



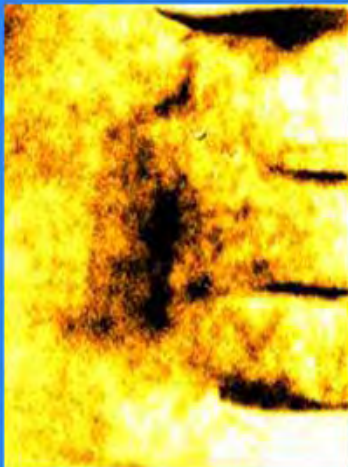
Initial



1 hour



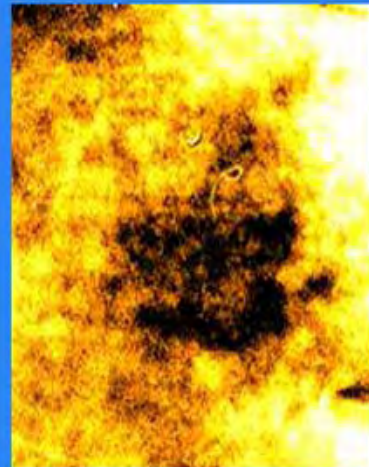
2 hours



3 hours



4 hours



post wash

In the above brightly colored slides of the back of a hand, the yellow denotes the presence of Bio-Safe[™] Skin Protectant, the dark spaces on the right side of the slides—the space behind the fingers. The dark rectangle on the back of the hand is the control—where Bio-Safe[™] wasn't applied.

The Forensic Scientist, who prepared this data, mixed Fluorescein into Bio-Safe[™] Skin Protectant to visually show the continuing presence of Bio-Safe[™]'s invisible glove over a four-hour period and to document that even following a hand washing four hours after the application, Bio-Safe[™] continues to cover the skin.